

## INFORMATION

The Wall Screw is a light duty carbon steel fixing for use in concrete and masonry base materials.

The fast and easy installation along with undercutting feature provide a rapid secure fixing without pre-drilling in wall-board or wood.

For concrete or masonry applications, pre-drilling is necessary.

It comes in countersunk and pan head and could be used in:

- Light weight fixtures
- Cable and electrical accessories

## BASE MATERIAL

- Wall-board or Wood
- Masonry
- Hollow/Solid Brick
- Hollow/Solid Concrete Block
- Concrete
- Hard Natural Stone

## FEATURES

- Undercutting Action
- No Spinning/Stripping
- Fast And Secure Installation
- White Head To Match Application
- Expansion Free
- Zinc Plated Minimum 5µm
- Reaction to Fire Class A1

## RELATED PRODUCTS



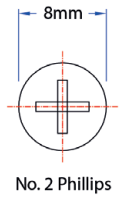
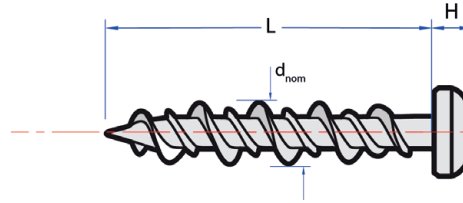
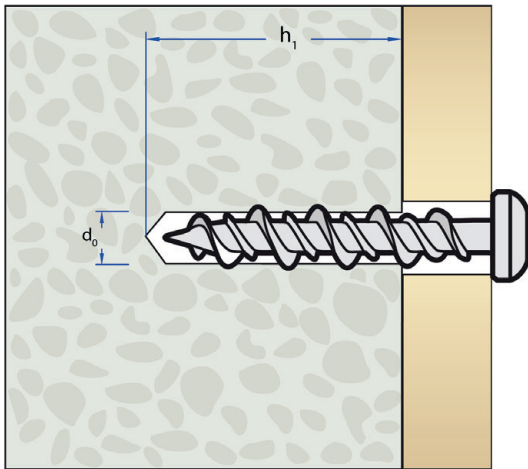
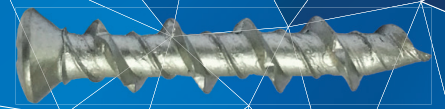
SD05

SDS+ Drill Bits

## RANGE AND LOAD DATA

RANGE DATA							
Part Number	Drill Hole Diam	Thread Diameter	Shank Length	Head Thickness	Head Colour	Head Size	Drive Size
	(d <sub>0</sub> )	(d <sub>nom</sub> )	(L)	(H)	-	-	-
	mm	mm	mm	mm	-	-	-
Countersunk							
WS5032CSZ	5	6	32	4	Bright Zinc Plated	No. 8	No. 2 Phillips
WS5038CSZ			38				
WS5050CSZ			50				
WS5032CSW			32		White		
WS5038CSW			38				
WS5050CSW			50				
Pan Head							
WS5032PHZ	5	6	32	3	Bright Zinc Plated	No. 8	No. 2 Phillips
WS5038PHZ			38				
WS5050PHZ			50				
WS5032PHW			32		White		
WS5038PHW			38				
WS5050PHW			50				





## CONCRETE\*

Performance Data (C20/25)

Thread Diameter ( $d_{nom}$ ) mm	Embedment Depth ( $h_1$ ) mm	Approved Resistance	
		Tensile ( $N_{Ra}$ ) kN	Shear ( $V_{Ra}$ ) kN
6	20	0.4	1.2
	25	0.8	1.2

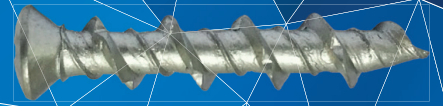
## WALL BOARD AND PLYWOOD\*

Performance Data

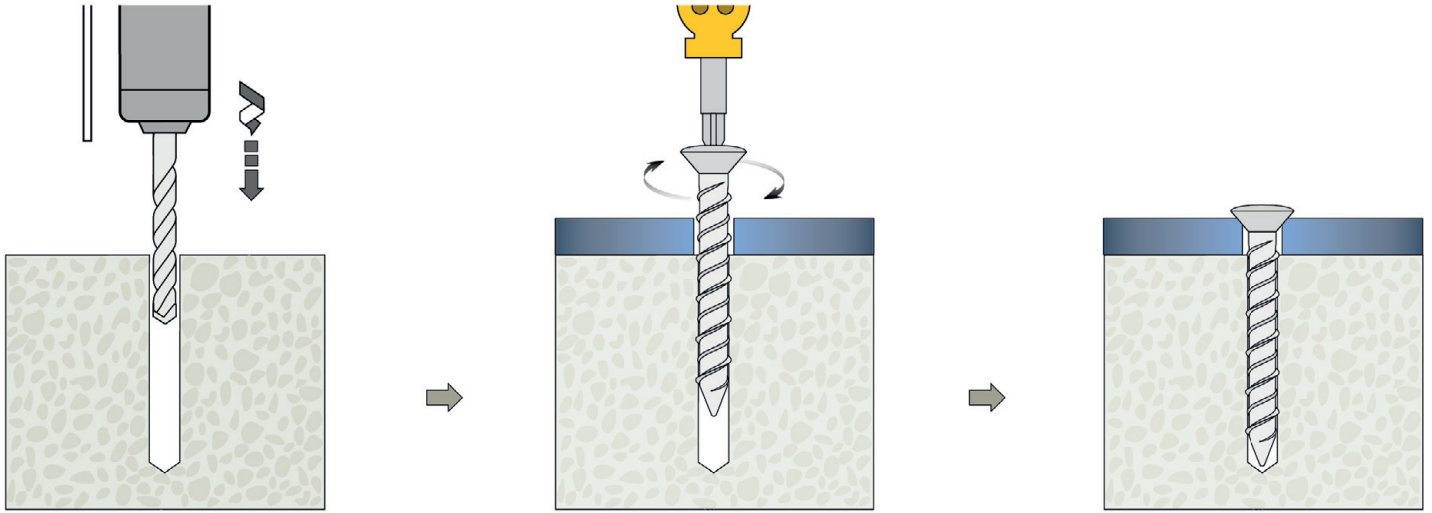
Thread Diameter ( $d_{nom}$ ) mm	Approved Resistance					
	12.5mm Wall board		15.0mm Wall board		20.0mm Plywood	
	Tensile ( $N_{Ra}$ ) kN	Shear ( $V_{Ra}$ ) kN	Tensile ( $N_{Ra}$ ) kN	Shear ( $V_{Ra}$ ) kN	Tensile ( $N_{Ra}$ ) kN	Shear ( $V_{Ra}$ ) kN
6	0.1	0.3	0.2	0.4	0.3	0.7

\* They are not suitable for critical overhead applications.





## INSTALLATION INSTRUCTIONS



-Drill\* correct diameter hole to corresponding depth

- Insert Wall Screw in through fixture into base material and use No. 2 Phillips driver to screw down

\* No pre-drilling is required for fastening into wall board or wood.

